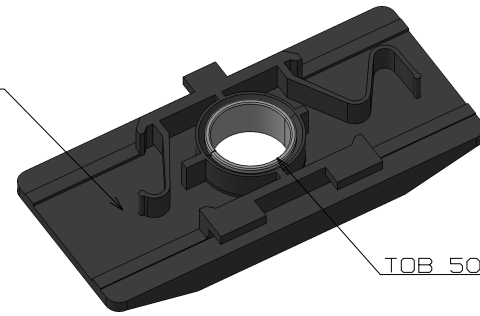


PAP 260.01

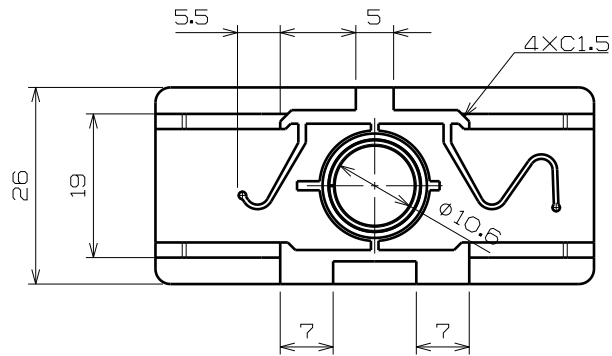
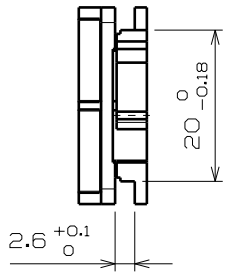


TOB 50.02.02(ININSERT)

NOTE : THERMAL CYCLE :

- 30MINUTES AT 180° CELSIUS ±5° (CATAPHORESIS)
- POSSIBLE DISPLACEMENT 12mm & 5mm
- PLASTIC FENDER THICKNESS IN THE CAP AREA 2,8<sub>1</sub>mm
- THIS CLIP IS MOUNTED WITH THE SCREW :  
VAM.S REX M6.0-20 OG-P/N 10489.028.134  
TIGHTENING TORQUE 8.5Nm
- INSERT:STEEL GRADE C60 TO C75 POSSIBLE
- SA1GD ACCORDING TO 01-07-002
- NATURE OF COATING:  
ZINC NICKEL 12/15% ALCALIN PERFORMA 280  
+ PASSIVATION FINIDIP 128+ FINITION FINIGARD 150
- FORMULATOR : COVENTYA
- COLOR : GREY
- APPLICATOR : TFS LA FERTE FRESNEL

HOLE DIMENSIONS SCALE : 1



THERMAL CYCLE

- 190° C / 15 minutes(Cataphoresis)
- 165° C / 25 minutes(Mastic)
- 165° C / 25 minutes(Sealer)
- 155° C / 25 minutes(Paint)

