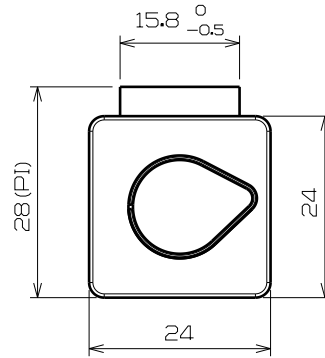
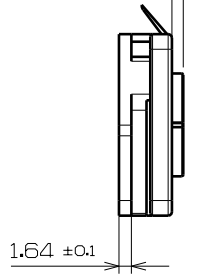
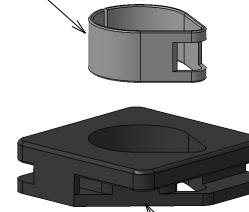


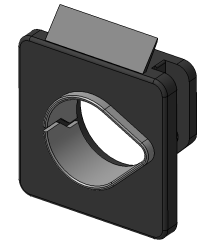
1.5 delivered position



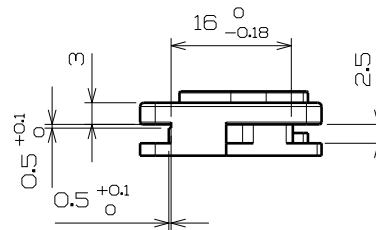
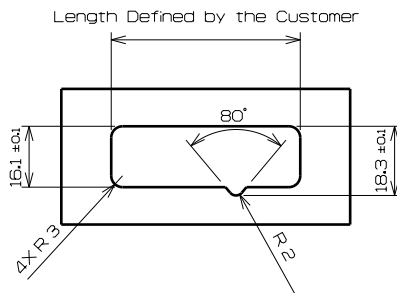
METAL INSERT



PLASTIC BODY PA6.6+GF13%



DEFINITION OF THE OPENING IN THE WING



DATA : The Surface Referenced X,Y Area

- Free From Projection Defects
- The Roughness of Surface X,Y Must be Neat
- Thermal cycle
 - 15 minutes a 190 °C (Cataphoresis)
 - 25 minutes a 165 °C (Cement)
 - 25 minutes a 165 °C (Sealer)
 - 15 minutes a 155 °C (Enamel)
- To be Mounted in an Opening Defined on the Drawing
- Thickness of Wing Recommended is 2

MATERIAL

- Metal Insert : Steel C66
- Plastic Part : PA 6.6 13% GF
- Plastic Law Material : Thchnyl A238 V13
- Supplier : RHODIA

COATING

- SA1GD According to 01-71-002
- Nature of Coating : ZINC Nickel 12/15% Alcalin Performa 280 + Passivation Fincp 128+Finion Fingard 150
- Formulator : Coventya
- Color : Grey
- Applicator : TFS La Ferte Fresnel