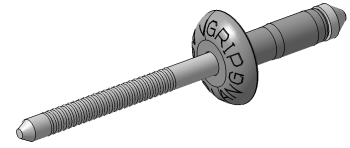
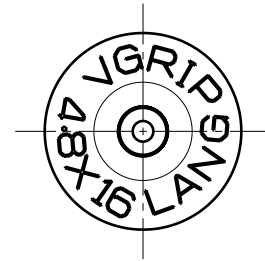
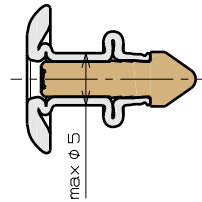


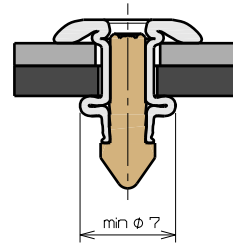
Detail 'A'



After Placing



After Placing



NOTE

1. MATERIAL
 - BODY : C10C
 - STEM : Steel
2. SURFACE TREATMENT
 - BODY : POLISHED
 - STEM : ZINC PLATED WHITE (Cr3+), MIN 3µm
3. GRIPE RANGE : 4.0mm ~ 7.0mm
4. HOLE SIZE : $\phi 5.0 \pm 0.2\text{mm}$
5. TENSILE STRENGTH : MIN 2750N
6. SHEAR STRENGTH : MIN 3100N